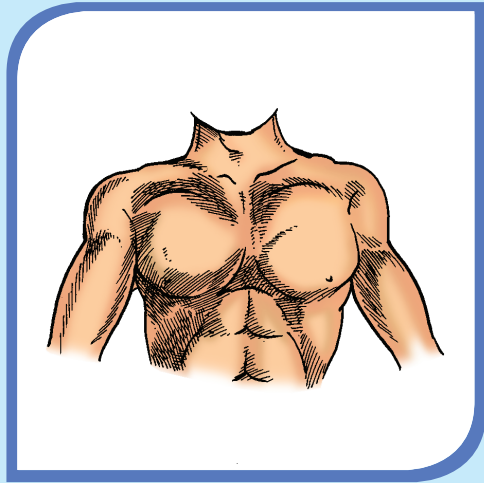
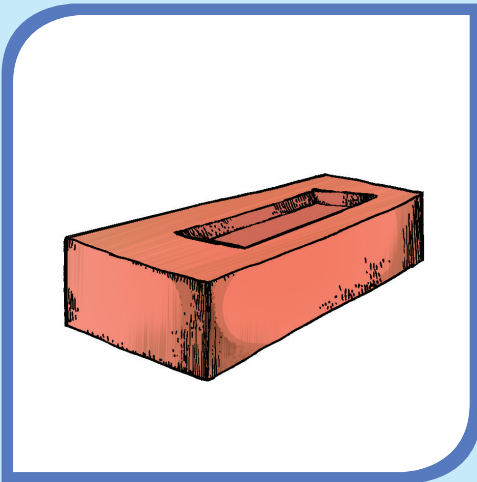


A a



Ǻn

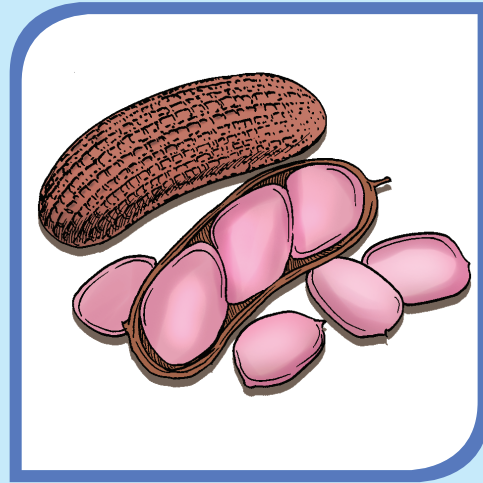


Aō

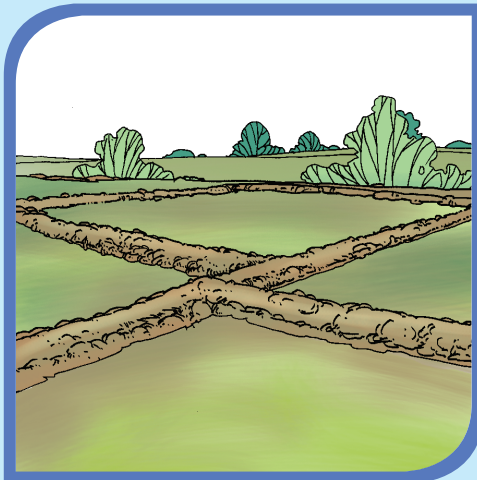


Ai

B b



X
Bihan



Bai

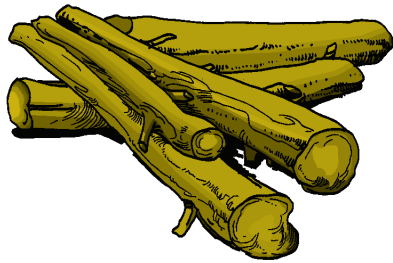


Baû

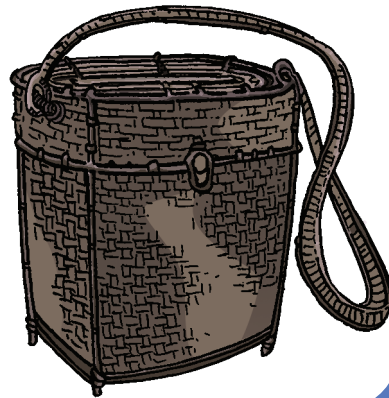
C c



C^u



Cau



Cⁱ

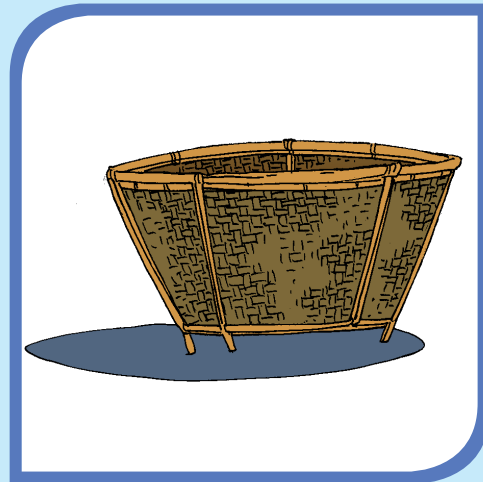
D d



Dĩ



Dai



Dẫn

E e



Ein

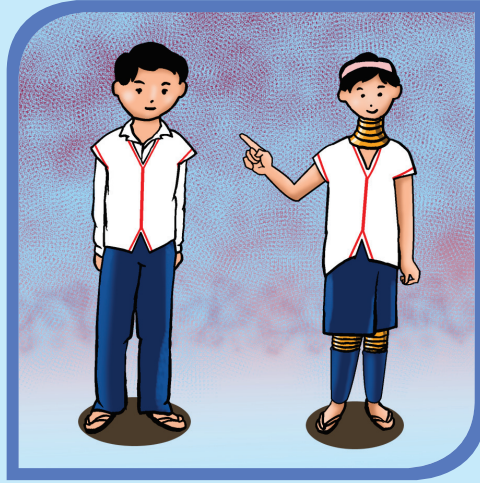


Ėin



Ei

G g



Gwa



Gwǎ



Ghû

H h



Hǔ



Hwai



Han

I i



Ikhreinla



Iûn

J j



Jon

K k



Kan

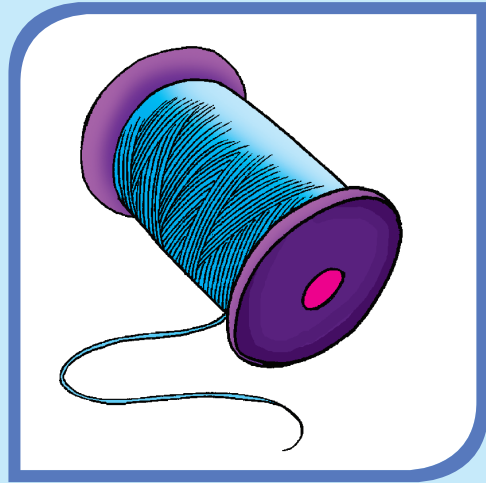


Kaǎ



Kòn

L l



Lū



Lwǎ



Lwǎn

M

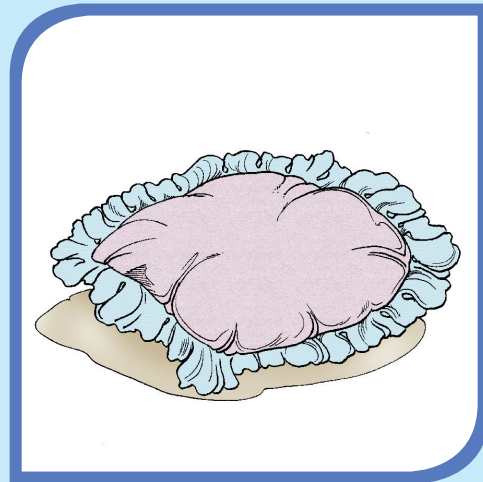
m



Mî



Mao



Mwan

N n



Nû



Nwai



Niphũ

O o



Oan

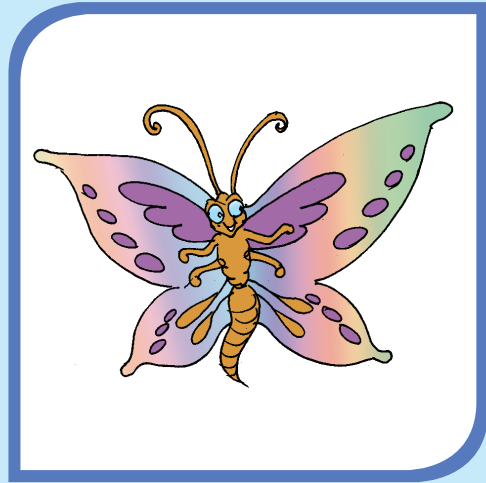


Ốn



Ốn

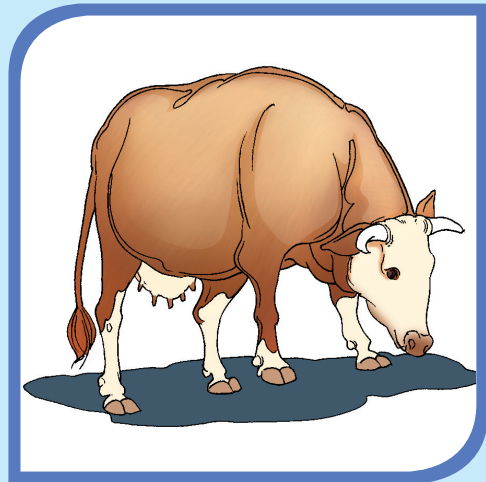
P p



Pipăn



Pî



Paŭ

R r



Raũ



Ri



Rwi^x

S s



Sa



Săn



Swai

T t



Thwî



Thi



Tein

U u



U-pǔ



U-mǎn



U-mì

W

w



Wein

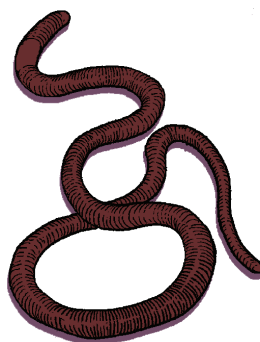


Wai

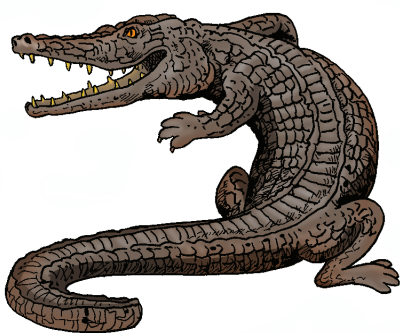


Wi

Y y



Yǎi



Yǎn



Yǔ